



Tapteal Talk

Vol. XXIV

News For The Tapteal Greenway

March—May 2008

Planning Strategically for 2008



President's Message:

Sometimes you just feel outnumbered and overmatched. It could be on the ball field, in the classroom, half way through your work week with no weekend light in sight or it is just one of those get up in the morning moods. Campaign 2008, NYSE daily results, Global Warming, gas prices, medical insurance or just driving around the Tri Cites and seeing the landforms change day to day, they wear on you.

*"They took all the trees
And put them in a tree museum
And they charged the people
A dollar and a half just to see 'em
Don't it always seem to go,
That you don't know what you've got
'Til it's gone
They paved paradise
And put up a parking lot"*

Joni Mitchell [Big Yellow Taxi](#)

One way to survive is to have a plan and stick to it. It needs to be a plan that you can control, adapt, improvise and implement to help you overcome those things that try to bring you down.

So, Tapteal Greenway presents its 2008 Strategic Plan in the hopes that you can feel good knowing that your support is working to make a difference and help to even the numbers and create match ups that we can manage to help make this a better place to live; safe and clean.

- Rivers and Trails Conservation Assistance Grant implementation to enhance Open Space planning
- Up river connectivity of the Tapteal Greenway trail system; concentrating on institutionalizing the section from W.E. Johnson Park to Horn Rapids Park
- Coordination of the Lower Yakima River Trail system to connect and become part of the

President's Message Continued (Page 10)

**2008 TAPTEAL
GREENWAY BOARD OF DIRECTORS**

Scott Woodward
President
627-3621
woodfish24@charter.net

Dave Jackson
Vice President
627-5834
d_jack@amerion.com

Vicki Clark
Secretary
727-7527
hrleerydr@charter.net

Richard Romanelli
Treasurer
627-0658
rroman@urx.com

Sky Bradley
967-0584
skybradley10@aol.com

Ginger Wireman
509-627-0877
wirebaby17@verizon.net

Adam Fyall
942-0354
ajfyall@verizon.net

Mike Lilga
946-8966
mmlilga@owt.com

Dave Nelson
627-6286
david.nelson@pnl.gov

Kathy Dechter
627-0950
kdechter@charter.net

Jack Clark
Newsletter Editor
967-7403
anj.clark@verizon.net

Jim Kelly
Prime21833@aol.com

COMING ATTRACTIONS

We are busy again, ice and snow gone; wind blowing in spring and Tapteal gets to work. We would appreciate any time you can give to these events:

March 8, 9 AM, Amon Basin Clean up; the last two years we have taken out over 14 tons of trash and we look forward to the challenge. With some new vehicle barriers and signs prohibiting vehicles it will be interesting to see if the trash level has gone down. We will also be cleaning up the new Leslie Road Amon Creek Natural Preserve trailhead. We also intend to install some signs so come on out and join the team. Our biggest need is pickup trucks to move the trash from the field to the drop boxes.

April 26, 9 AM, Tapteal Bend cleanup, trail building and plant restoration. We need chain saws, weed eaters, pruning shears, shovels, wheelbarrows and a few pickup trucks to help with this project.

Any questions, you can contact Scott at 627-3621.

Vision Statement

The Tapteal Greenway is a corridor where wildlife, natural vegetation, and people coexist; which provides opportunities for non-motorized recreation, education and habitat protection; and is planned and managed for future generations through community involvement and interjurisdictional cooperation.

Tingstad and Rumbel



Weekend Big Success

Wine tasting, wine auction, silent auction, concert, wow, what a weekend we had February 1 and 2. The bottom line was over \$3000 raised and lots of fun for all who braved the weather. It was a courageous effort for Nancy Rumbel and Eric Tingstad just to get over the mountains as ALL of the passes we closed. Another courageous effort by those who came to the silent auction and concert on Saturday night as a blizzard raged across the Tri Cities. We were all rewarded with good friends, good wine and great music, and a huge thank you to all who came out to support the Greenway.

Team Battelle led by Kami Lowry did a fantastic job organizing the silent auction and the concert evening. Bookwalter Winery graciously provided us space and excellent service for the sold out Friday wine tasting event. Both Bookworm stores, REI and Octopus Garden hosted our ticket sale sites and the star of the entire weekend was volunteer **Andy Plymale** who produced and directed the entire production. We also had tremendous support from local wineries who donated wine for the tasting and the silent auction: *Hedges Family Estates, Goose Ridge, Bookwalter, Cougar Crest, Alexandria Nicole* and *Reininger* all contributed. This was truly a community effort that stretched up the Walla Walla and Yakima valleys.

We are planning a summer event of similar fashion so stay tuned to the web site and the newsletter for details.

Call to Duty

TGA is already recognized as a voice of conservation in the Lower Columbia Basin and we are emerging as a significant Land Trust organization. The responsibilities are increasing but it is a “fine and pleasant misery” working to create a legacy of conservation, education and outdoor recreation for this community.

We need your energy; we need your knowledge and your resources to help us move up to the next level. Please consider becoming part of the new guard and volunteering to serve on the Board of Directors during this exciting period. We meet once month on the second Monday and occasionally have special duties associated with activates. Most of your correspondence can be done via E mail if you prefer.

Amon Basin Vehicle Access Control Task Force on Patrol



For many who grew up in the Tri-Cities, the place known as “Beer Falls” brings back a memory or two. The culvert at “Beer Falls,” south of Claybell Park in South Richland, is located east of a remarkable wetland in Eastern Washington. With the help of the Tapteal Greenway Association, the City of Richland, and many local citizens, nearly 100 acres of this wetland and its surrounding shrub-steppe have been established as an official City Park now known as the Amon Creek Natural Preserve. In addition to the Preserve itself, the surrounding area holds many more acres of Amon Basin, a watershed that drains to the Yakima River.

Bordered by Leslie Road, the railroad along Clearwater Avenue and many neighborhoods in Richland and Kennewick, the Amon Creek Natural Preserve and surrounding area is open to muscle-powered (non-motorized) recreation. It is closed to all unauthorized vehicles, such as automobiles, motorcycles, and quads (ATVs). No trespassing is allowed on the railroad tracks or within the 200 feet right-of-way on either side of the tracks. No trespassing also applies to the area known as “Beer Falls.”

With access control as their main objective, 11 local agencies have coordinated to promote public safety and to protect the Amon Creek Natural Preserve and nearby area from motorized vehicles, dumping, and other illegal activities. Through three meetings since September 2007, these agencies have established signs and barriers in the area and agreed on procedures to ensure that violators be held accountable.

Enforcement is real, and is a cooperative effort. Police have recently handed out citations for dumping, and responded to other calls of violations in the area, including unauthorized motor vehicles. Violations can be reported to the Richland Police non-emergency number: **628-0333**. Enforcement officers from Richland, Kennewick, the U.S. Bureau of Reclamation, Washington State Department of Fish and Wildlife, and Burlington Northern Santa Fe Railroad are available to assist in enforcement.

The collaborative work was accomplished by Richland Police and Fire, and Parks Department; Kennewick Police and Engineering Departments; Burlington Northern Santa Fe Railway and BNSF Police, Washington State Department of Fish and Wildlife; Tapteal Greenway Association, Bonneville Power Administration; and the Kennewick Irrigation District (KID). KID provided meeting space and technical support services that helped make the collaboration successful.

A map identifying all the access control points is available on our web site on the downloads page. If you visit this area or live in this area it is recommended that when you see violators report them using the map access points as a reference for dispatch to help direct the officers.



IMPORTANT DATES

Due the 20th of the month preceding for:

- ⇒ **March 1, 2008**
- ⇒ **May 1, 2008**
- ⇒ **August 1, 2008**
- ⇒ **November 1, 2008**



Kingfisher Moment

Adam Fyall says : I would like to extend a thank you to everyone who came out to Horn Rapids Park the last Saturday in February. We had 29 volunteers that day, a new record.

That work session concludes our "official" season at the park; however there may be a couple of smaller groups through the spring working on some specific projects in the Horse Camp.

I want to extend additional and specific thanks to some folks who helped bring things together for last weekend:

- Dennis Rockwell and Mark Finkbeiner, our park rangers, for preparing sites and materials for the owl burrows.
- Mike Livingston, Nancy LaFramboise, Charlotte Reep, Heidi Newsome, and Jennifer Meisel for assisting with the owl burrow planning.
- US Fish and Wildlife Service for donating the plants that were planted.
- We planted roughly 400 bitterbrush seedlings both north and south of the main park area. We also installed 4 burrowing owl nest burrows.

The following week, March 1st, Joel Tinsley, Mike Luzzo, and I returned to install 5 additional smaller satellite burrows.

I would also like to thank and acknowledge the Benton-Franklin Juvenile Justice crew that came to the park later, led by their coordinator, Mark Hammer; and mentors Scott and Pam Woodward, John Butterfield, and Shannon Hays-Truex. The crew did an excellent job in cleaning-up various debris and tumbleweeds along a trail junction. It was great to have them at the park for their first official work day with the mentors, and their participation brought our total number of workers at the park that day to over 40.

Things to Remember About Legacy Gifts to Tapteal Greenway

The Tapteal Greenway qualifies as an eligible public charity for tax purposes (TGA is a 501 C Non Profit Organization). There are many advantages as a charitable tax deduction. These are reducing your tax burden and helping provide a high quality of sustainable life in our community.

It would be gracious if you would consider a contribution to the Greenway this year!

RCSC Rendezvous at Horn Rapids



The pilot program for the Restorative Community Service Crew officially got under way at Horn Rapids Park on Saturday February 23rd. This program is a joint effort with the Benton Franklin Juvenile Justice system and Tapteal Greenway to give misguided kids a chance to mentor with adults in a positive outdoor environment. Adam Fyall of Benton County Parks had a full venue of work that needed to be done at Horn Rapids Park ranging from installing Burrowing Owl burrows to planting Bitterbrush and a special task for the RCSC group was trail work on the river trail. There was a tremendous turnout by volunteers and all tasks were accomplished by noon. Mark Hammer the RCSC supervisor set up his barbecue grill and had a special lunch time treat for his kids to celebrate the inauguration of the new program. Tapteal provided four adult mentors to work alongside the juvenile offenders, John Butterfield, Shannon Truex, Pamela and Scott Woodward have recently completed their training and thoroughly enjoyed their time in the field on this beautiful spring like day.

We look forward to many more days with the RCSC group and we urge you to join us. A few hours when you can spare them, working and communicating in a positive manner is all that is required. Please call Scott Woodward, 627-3621 if you would like to join this team. It is a great way to give back to the community.

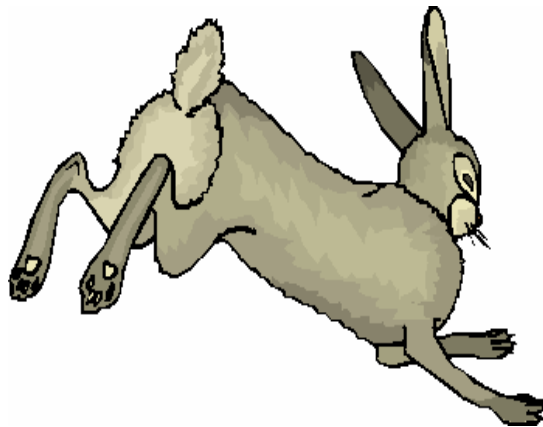
Go Play Outside Alliance Washington

The Go Play Outside Alliance Washington (GOPAW) has planned the Youth Outdoor Adventure Expo 2008 for May 16-17 (Friday and Saturday) at the Benton County Fairgrounds. The objective of the Expo is to provide an opportunity for young people, especially grades 3-8, to experience outdoor activities that they generally would not encounter in front of an electronic device. The Expo has a strong emphasis on natural resource and outdoor oriented activities including archery, kayaking, fishing, firearm safety, horsemanship, bird and plant identification, hiking, geology and many others. Organizations involved in this local venture include the Tapteal Greenway, Mid-Columbia Audubon Society, Friends of Badger Mountain, Native Plant Society, Back Country Horsemen, Richland Rod and Gun Club, Columbia Basin Flycasters, Glacial Floods Institute, as well as the Washington Department of Fish and Wildlife, US Fish and Wildlife (McNary), and the Wanapum Band.

The groups involved with the Open Space Coalition, such as Tapteal Greenway, will occupy one of the buildings at the Fairgrounds and present demonstrations and information concerning environmental restoration and awareness. A similar Expo was held in Longview last year and was a great success for nearly 1000 young folks. To learn more about the previous Expo, go to <http://www.americantrails.org/resources/kids/GOPAW07.html>.

We will provide more information concerning the plans for the 2008 Expo in the next newsletter.

Walk on the Wild Side



On April 19th at 9 AM we will be sponsoring a Wildlands Walk through Amon Basin. We hope to expand exposure to Amon Basin to new comers and touch base with those who enjoy this urban park land. We will be meeting at the Claybell Park parking lot in South Richland. Please leave your pet at home though they are welcome on any other day. The hike will last up to two hours; we hope to catch the wildflower bloom in action. The main attraction will be the newly created Amon Creek Natural Preserve with a special added treat to include the brand new additional 35 acres that will be added to the ACNP.

Drinking water is not available.

Please join us for this walk through the Amon Basin wildlands.

An Invitation

The Lower Columbia Basin sponsor a forum with Birding man from 1:30 PM to 3 PM on PUD at 2721 W 10th Ave in now found in 20 states, are with stops at places to see become the fastest growing U.S., with more than 46 mil-watch special birds such as Long-billed Curlew, Sage Shrike. Together with public bon Washington published the the Cascade Loop, in 2002; ridor, in 2003; the third, the and the fourth, the Olympic Trails are big business in the U.S. They attract visitors to primarily rural areas, which spurs economic development and gives residents increased incentive to safeguard natural areas around their communities and region. Bird watchers spend upwards of \$30 billion annually, including \$10 billion on travel. Texas's birding trail, for example, annually attracts more than 1.4 million birders who spend \$155 million; on the local level, every 100 new bird watchers generate one full-time job, \$2,500 in business income, and \$2,000 in tax revenue. Locations already recommended by Lower Columbia Basin birders include: Scooteny Reservoir, Big Flat HMU, the Yakima River delta with Bateman Island and Two Rivers Park. Audubon is seeking more sites, particularly along the I-82 corridor west to Prosser. Please RSVP to Robin Priddy at robin.priddy@gmail.com by March 14th; phone 509-378-1694 with questions or for further information.



Audubon Society will Trail Director Christi Nor-March 19th at the Benton Kennewick. Birding Trails, self-guided driving tours birds. Bird watching has outdoor recreation in the lion Americans traveling to south central Washington's Sparrow and Loggerhead and private partners, Audu-Washington's first route, the second, the Coulee Cor-Southwest Loop, in 2005; Loop, in 2006. Birding

PRESIDENT'S MESSAGE CONTINUED

Continued From Page 1

Northwest Discovery Water Trail program utilizing the team efforts on the Yakima River boat launches and interlocking interpretative trails.

- Re-visit our educational mission enlisting in the GoPaws program, the State Parks No Child Left Inside project and improving the Tapteal Bend for an educational footprint.
- Raise funds for a trade show type traveling display to augment our many public appearances
- Establish a member and contact data base for immediate communication purposes.
- Finish the Amon Basin Vehicle Access Control Project
- Begin restoration and trail development at Amon Basin
- Continue to seek out funds for additional acquisition of conservation property
- Recruit new personnel to the Board of Directors.

We hope you can heed the call when the call comes for help on workdays, attendance at the RTCA public meeting or fundraising opportunities that support our programs. We PLAN on making a difference again this year, with your help it will happen

RTCA Marches On

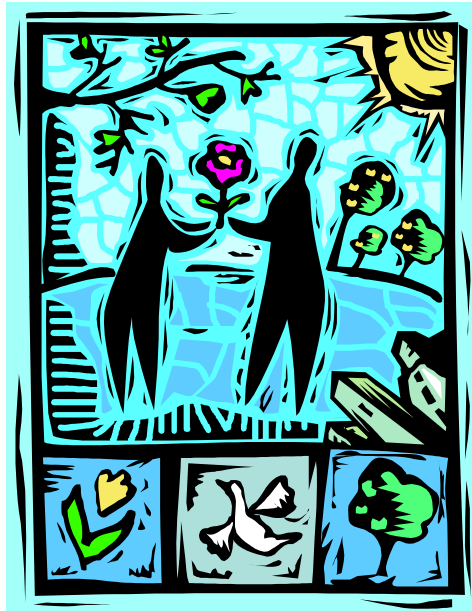


The National Parks Services' *Rivers Trails and Conservation Assistance* grant program awarded Tapteal Greenway a grant to study open space recreational opportunities in the Tri City area in December of 2007. Part of the study will also evaluate the regulatory tools that can be implemented to help protect these resources and establish a Tri City wide community effort to accomplish these goals. The initial Steering Committee recruitment has been completed and in the final week of February preliminary meetings will be held involving the NPS and Tapteal to establish a strategic plan for launching the all important public process. The excellent resources of the Steering Committee will be utilized to move the process from the committee level to the community level.

This is one of the most exciting projects that Tapteal has taken on and we hope you will become a large part of the process once we move into the community level of planning.

We continue to work hard to make this a better place to live and play.

Alternative Gift Fair High On Our List



What a wonderful idea where one gift benefits many. Tapteal Greenway was invited to host a table at the first ever Alternative Gift Fair. This event was sponsored and hosted by the Community Unitarian Universalist Church in Pasco. The church was filled with non-profit organizations educating shoppers about their organization and offering shoppers an alternative to the traditional gifts.

“The fair provides a unique opportunity to raise much-needed funds for charitable organizations while showing appreciation for the special people in your life.”

We were overcome with the energy in the room as shoppers and vendors exchanged greetings and information. It was one of the most inspiring things that Tapteal has been involved in as an organization; we were humbled in the presence of some of the other groups. We are looking forward to the 2008 version during the Holiday season. Notably, Tapteal Greenway netted \$1300 on that day from appreciative shoppers.

The churches provided us with a quote that fit the day very well:

“And he puzzled three hours till his puzzler was sore. Then the Grinch thought of something he hadn’t before! Maybe Christmas; he thought, doesn’t come from a store. Maybe Christmas perhaps means a little bit more!”



Sign Me Up! I'm ready to join the Tapteal Greenway

by Joining:

- Student 10.00
- Individual 15.00
- Family 30.00
- Mink 100.00
- Monarch 250.00
- Steelhead 500.00
- Kingfisher 1000.00
- Other _____
- Non-profit Partner 50.00
- I'd like to make a donation

by Volunteering:

- | | |
|--|---|
| <i>committees</i> | <i>events/projects</i> |
| <input type="checkbox"/> Plan Implementation | <input type="checkbox"/> clean-ups |
| <input type="checkbox"/> Conservation | <input type="checkbox"/> construction |
| <input type="checkbox"/> Education | <input type="checkbox"/> fundraisers |
| <input type="checkbox"/> Publicity | <input type="checkbox"/> water quality monitoring |
| <input type="checkbox"/> Legislative | <input type="checkbox"/> restoration |
| <input type="checkbox"/> Fundraising | <input type="checkbox"/> trail maintenance |
| <input type="checkbox"/> Membership | <input type="checkbox"/> other _____ |

NAME : _____

ADDRESS : _____

CITY : _____

STATE : _____ ZIP : _____

PHONE : _____ EMAIL : _____

Please Make Checks to:
 Tapteal Greenway
Mail to:
 Tapteal Greenway
 P.O. Box 3007
 Richland, WA 99354

Tapteal Greenway
P.O. Box 3007
Richland, WA 99354
(509) 946-8966
Http://tapteal.org

NON-PROFIT
ORG.
U.S. Postage
PAID
Pasco, WA
Permit #277

Address Services Requested